



Women's Refugee Commission

Financial Report for the Fiscal Year 2010

The following is a summary of the financial operations of the Women's Refugee Commission for the fiscal year ending September 30, 2010. This summary is compiled from numbers presented in the 2010 annual financial statement of the International Rescue Committee, Inc. (IRC). The Women's Refugee Commission is legally part of the IRC, a non-profit 501 (c) (3) organization. Charitable contributions made to the IRC and to the Women's Refugee Commission are tax deductible. However, the Women's Refugee Commission receives no direct financial support from the IRC. A copy of the audited 2010 financial statements of the IRC, which includes the financial results of the Women's Refugee Commission, is available upon request.

Revenues	2010	2009
Foundations	2,647,928	3,171,029
Individual Contributions	776,190	492,479
United Nations Grants	36,134	73,939
Government Grants	532,107	1,316,331
Special Events	603,563	634,424
Interest Income	12,194	47,450
Donated Goods and Services	597,720	952,525
Total Revenue	5,205,837	6,688,175

Expenses	2010	2009
Detention & Asylum Program	386,487	402,119
Detention & Asylum: In-kind	569,720	715,825
Reproductive Health Program	772,117	666,722
Reproductive Health Program: In-kind	25,000	0
Fuel and Firewood**	236,832	447,414
Protection Program—Livelihoods	442,736	1,132,706
Protection Program—Livelihoods: In-kind	3,000	25,000
Protection Program—Children & Youth	247,068	368,291
Watchlist on Children and Armed Conflict	558,746	608,213
Advocacy	203,502	221,141
Communications	324,165	436,111
Communications: In-kind	0	211,700
Fundraising	706,674	708,628
Administration/Board of Directors/Transfer to IRC	404,558	537,741
Total Expenses	5,071,613	6,481,611

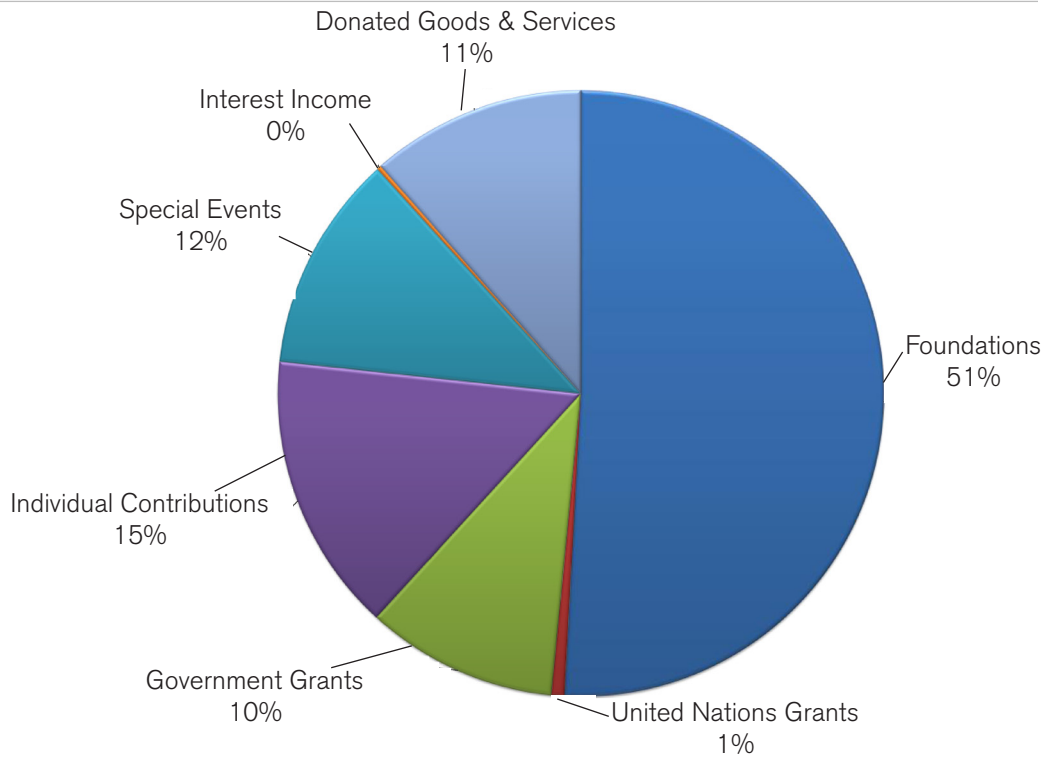
Surplus/(Deficit)	134,224	206,564
--------------------------	----------------	----------------

Summary of Fund Balance Analysis

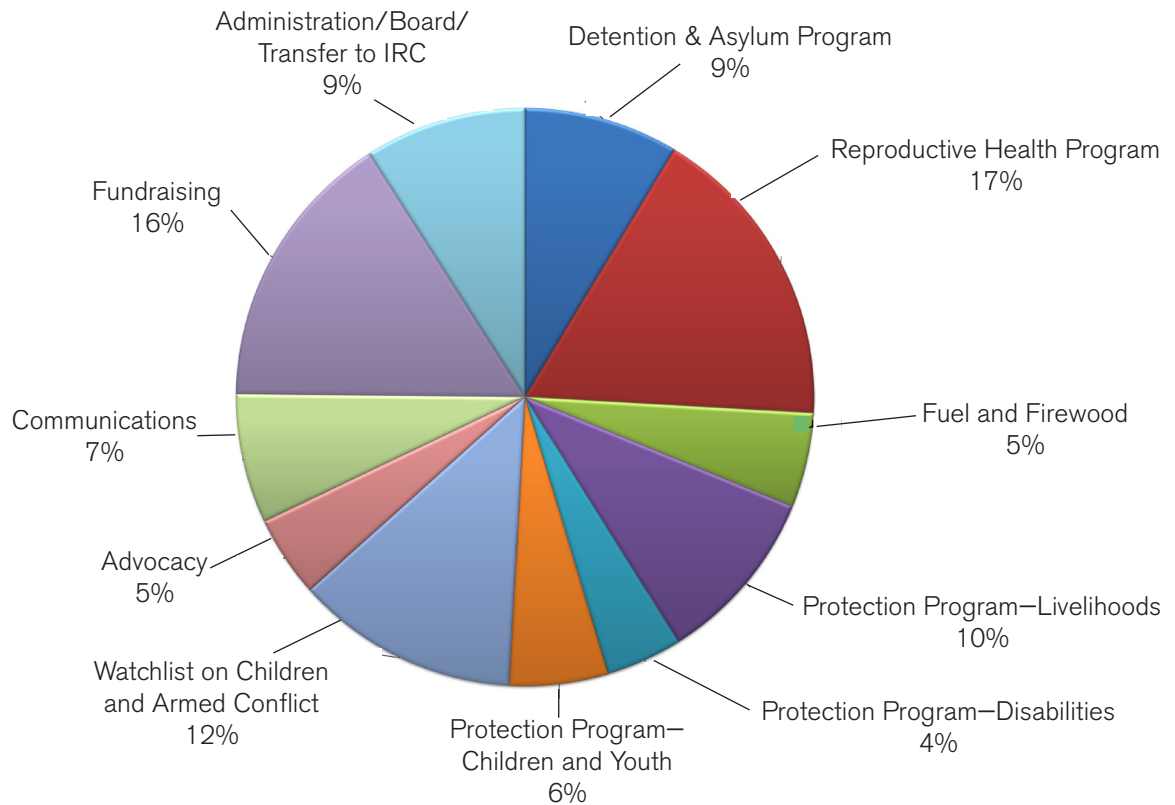
TYPE OF FUND	Balance End of FY2010	Balance End of FY2009	Change in Fund Balance
Endowment (Founders) Fund	835,764	742,667	93,097
Memorial Funds	205,474	234,810	(29,336)
Unrestricted Funds	529,832	497,654	32,178
Temporarily Restricted Funds	927,486	889,342	38,144
TOTALS	2,498,555	2,364,473	134,082



FY 2010 Revenue



FY 2010 Expenses*



* Excluding in-kind contributions.