



Mitigating Risk of Gender-Based Violence

Implementing Economic & Household Energy Programs as Tools of Protection

Research. Rethink. Resolve.

Mitigating Risk of Gender-Based Violence (GBV) Workshop

Welcome & Introduction:

- Women's Refugee Commission
- Workshop participants

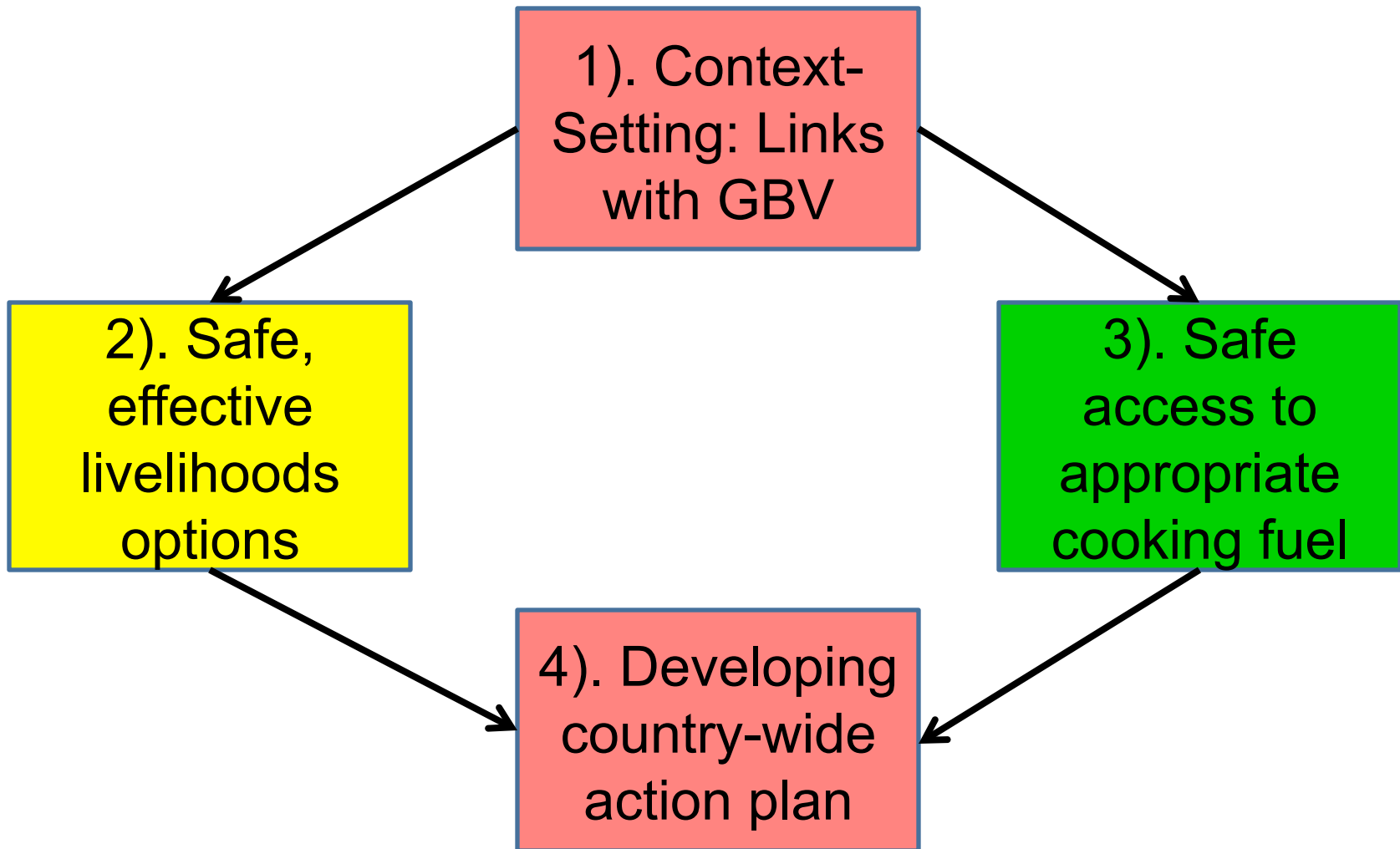


Workshop Objectives

- Understand how to mitigate vulnerability to GBV through prevention-focused programs that enhance protection;
- Learn to design effective & safe livelihood programs to mitigate risks;
- Develop awareness of how safe access to cooking fuel can reduce vulnerability;
- Develop joint action plan to enhance protection of refugee women & girls against GBV in Kenya



Overview of the Workshop



Defining GBV

- Includes physical, sexual or psychological harm or violence
- Results from power imbalances that exploit distinctions between men & women
- Primarily affects women & girls
- Risk increases in conflict settings



Scope of GBV

- Globally, 1 in 3 women or girls is beaten or sexually abused in her lifetime
- 50% of sexual assaults are committed against girls <16
- 80% of transnational trafficking victims are women & girls; 70% of them are trafficked for the commercial sex industry



Scope of GBV (continued)

Kenya:

- Large number of unregistered refugees
- Specific # of GBV incidents impossible to quantify
- Perpetrators include families; military; police; other refugees
- Key concerns = domestic violence, trafficking, rape, physical abuse, harassment in domestic work, sexual exploitation



GBV Vulnerability Factors

- Lack of safe, effective livelihoods options
- Insufficient rations/food-NFI distributions
- Lack of safe access to household energy
- Lack of legal rights, Impunity
- Shift in household power dynamics
- Socio-cultural norms
- Other?



GBV-related Activities

- Typically divided between
 ← ***PREVENTION & RESPONSE*** →
- ***RESPONSE*** activities = practical:
 - Clinical care
 - EC/PEP
 - Psychosocial support
 - Legal assistance

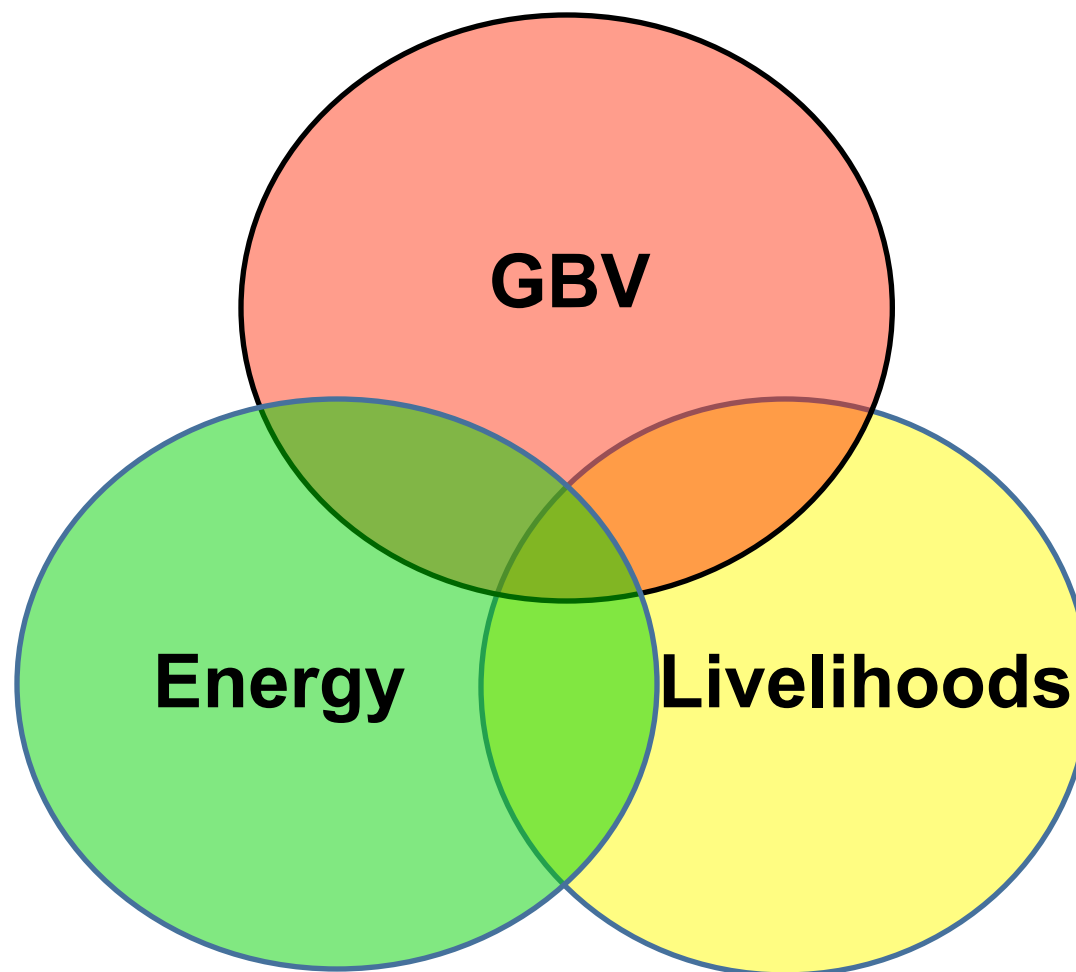


GBV-related Activities

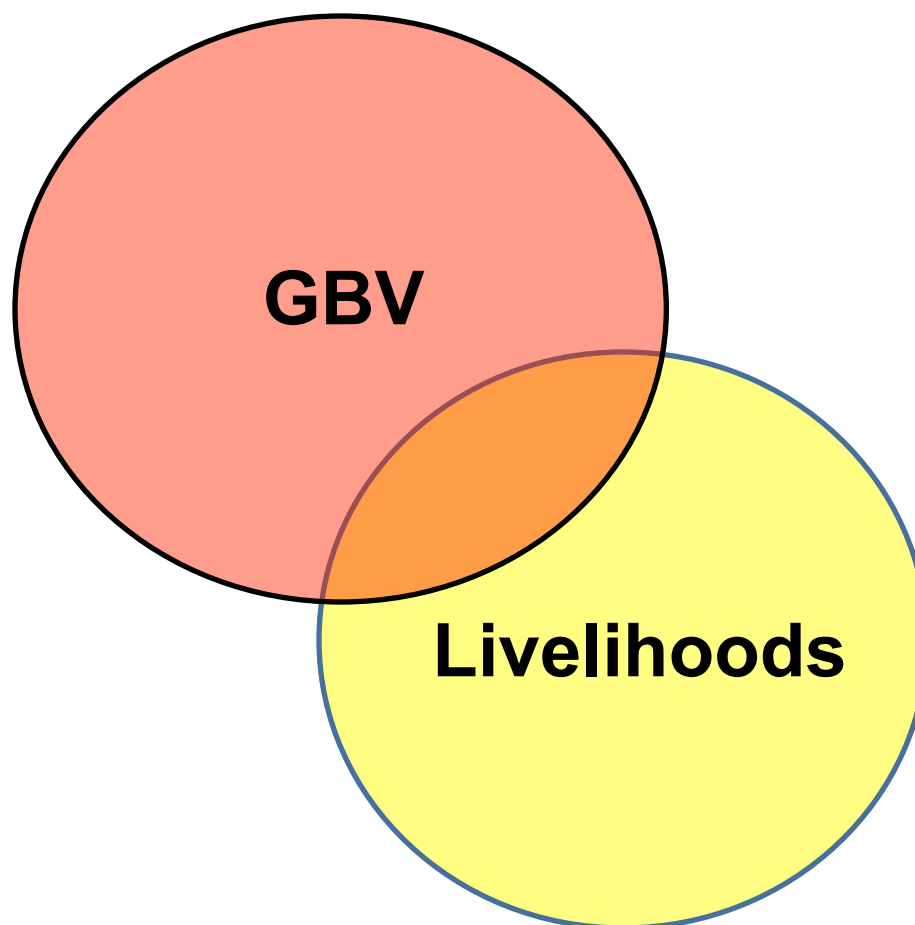
- ***PREVENTION*** activities = longer term
- Focus on KAP, behavior change:
 - Community sensitization
 - Awareness raising
 - Discussion groups
- Less *practical* than response activities



GBV, Livelihoods & Household Energy



Linking GBV & Livelihoods



Risk of GBV



- Shift in household power dynamics
 - No control over household income
- Lack of economic opportunities
 - Harassment by employers and male laborers
- Lack of sufficient income
 - Resort to exploitative relationships for survival



Integrating Protection



Livelihood Programs should:

1. Involve men and women to address gender roles
2. Include protection elements
3. Be market-driven to be effective



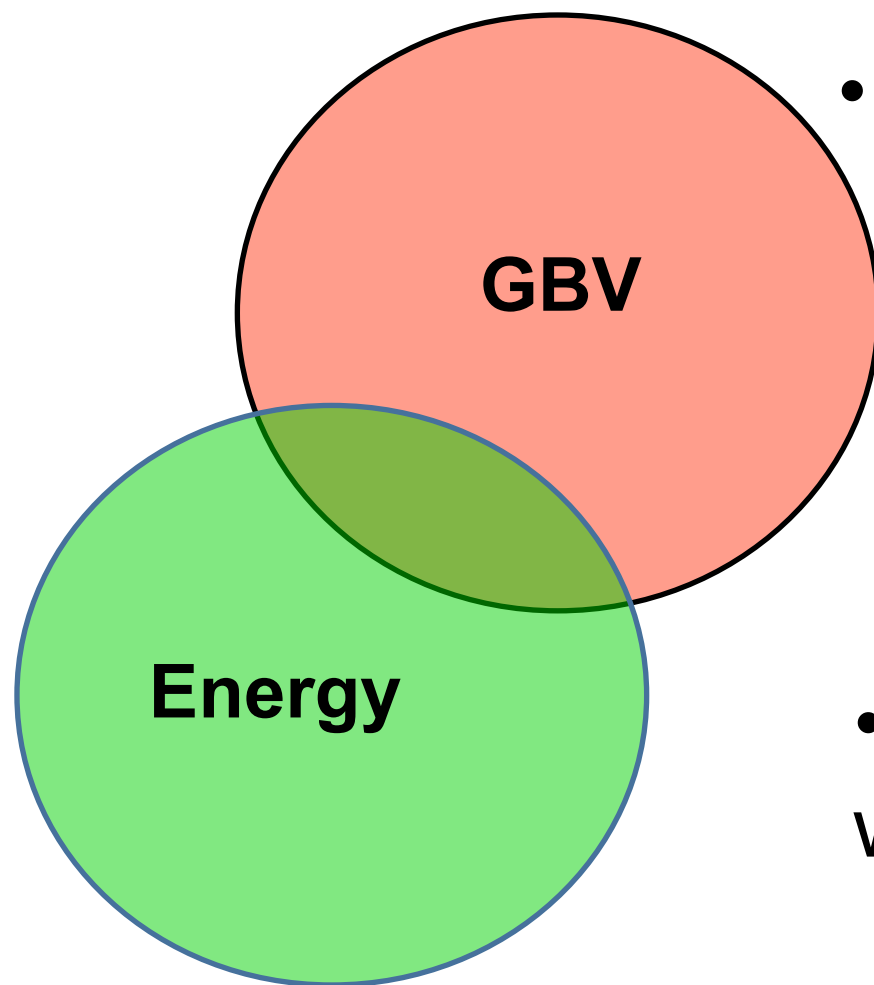
Activity

Read the following case study and underline **three** possible risk factors to Gender-Based Violence.

Please discuss at your table: what **two** follow-up questions would you ask to determine if Gender-Based Violence was a concern?



Linking GBV & Household Energy



- Food rations distributed by aid agencies must be cooked
- Cooking fuel almost never distributed
- Women/girls risk rape when they collect wood

GBV & Household Energy (cont'd)



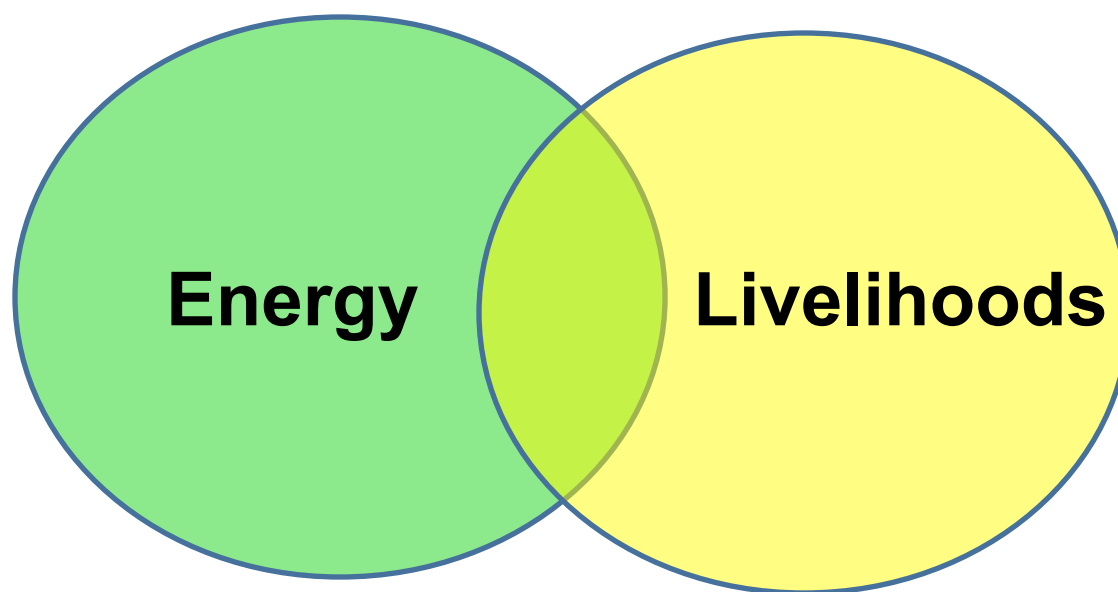
- Vulnerability factors can combine to further increase risk

GBV & Household Energy (cont'd)

- What are some specific issues of concern in Kenya?



Linking Livelihoods & Household Energy



Exercise: Assessing Existing Workplans

- List 5 key activities
- Identify any links with GBV, HHE and/or LLH
 - If GBV: is the activity focused on prevention or response?
- Have you begun to note any linkages?





**WOMEN'S
REFUGEE
COMMISSION**

Research. Rethink. Resolve.

womensrefugeecommission.org