

WOMEN'S
REFUGEE
COMMISSION

Research. Rethink. Resolve.

FY
2022
YEAR IN REVIEW
OCTOBER 2021 – SEPTEMBER 2022

Vision

Our vision is a world in which refugee and internally displaced women, children, and youth are safe, healthy, and self-reliant; have their human rights respected and protected; and inform and drive their own solutions and development.

Mission

Our mission is to improve the lives and protect the rights of women, children, and youth displaced by conflict and crisis. We research their needs, identify solutions, and advocate for programs and policies to strengthen their resilience and drive change in humanitarian practice.

How we achieve change: Research. Rethink. Resolve.

Our work begins in the community. We listen to displaced people and learn about their strengths and their unmet needs. Together with them and local partners we identify potential solutions to the challenges they face. We develop tools and provide technical assistance to practitioners to improve humanitarian response. We work with donors and policymakers to ensure that our recommendations are institutionalized and implemented across the globe.



This is a challenging time for any organization working to shape humanitarian policy and practice. Compounded crises, including conflict, climate, and COVID 19, are driving unprecedented levels of economic vulnerability, food insecurity, displacement, and humanitarian need. In 2022, more than 100 million people were forcibly displaced and some 274 million were in need of assistance and protection.

The vicious cycle of one emergency on top of the next gives way to terrible, long-lasting consequences, particularly for displaced women and girls and other marginalized populations. It dramatically increases their risk of multiple forms of violence and interrupts their access to lifesaving protections and services, destroying lives, families, and communities and impacting progress on many fronts.

Global shocks and new emergencies – Ukraine, Afghanistan, and Tigray for example – and declines in political rights and civil liberties around the globe have disproportionately impacted women’s lives and rolled back progress on gender equality and women’s rights by at least a decade.

We recognize the extraordinary efforts that are needed by the international community and organizations like the Women’s Refugee Commission to address the deepening humanitarian, environmental, and governance crises that affect the most disenfranchised and marginalized populations, especially displaced women and girls.

We will continue to move forward our gender equality, inclusion, and resilience program priorities; advocate for the rights and protections of women and girls and other

marginalized groups; ensure gender-based violence and sexual and reproductive health and rights are priority issues for humanitarian policy makers and donors; and consolidate our partnerships.

We will remain a leading voice advocating to international agencies and the United Nations for systemic change across the humanitarian system and policies—to increase protection from gender-based violence; strengthen local leadership and refugee voices in change processes that affect their lives; and increase age, gender, and diversity inclusion.

We will continue efforts to identify critical gaps in humanitarian response programs and develop new approaches—measurement of self-reliance; multi-disciplinary interventions to mitigate the risk of child marriage; and programmatic and operational capacity strengthening for youth-led leadership and policy advocacy.

We will continue to push the United States to step up to its legal responsibilities to people seeking asylum.

In all we do, we will continue to listen to displaced people and local organizations. After all, they know best what’s happening on the ground.

I am proud of what we, our partners, and displaced women and youth achieved in 2022. Thank you for standing with us and helping us do whatever it takes to ensure that refugees are safe, healthy, and self-reliant.

Sarah Costa
Executive Director

WRC RESPONDS TO CRISES IN UKRAINE AND AFGHANISTAN

The Women's Refugee Commission led advocacy efforts to ensure humanitarian responses to the conflicts in Afghanistan and Ukraine took into account the impacts on women, girls, and other marginalized populations.

We pressed UN Member States, multilateral organizations, and governments to accelerate their efforts to support Afghan women and girls. We led advocacy at the UN Security Council to uphold women's human rights in the UN Assistance Mission in Afghanistan mandate and in the work of the special rapporteur on human rights in Afghanistan. We created spaces for Afghan women human rights defenders to engage policymakers directly, including by supporting them to speak in front of UN Security Council members and officials at the US State Department and Congress. We also established and led a working group of advocates from peer organizations to push for more effective US diplomatic efforts and humanitarian and development assistance to uphold Afghan women's rights. At each stage of the crisis, WRC served as a go-to resource for policymakers for our analysis and recommendations, many of which were integrated into US and others' programs and responses to the situation in Afghanistan.

In response to the crisis in Ukraine, WRC spearheaded advocacy efforts to ensure that emergency response addressed the critical needs of women, children, and others, such as people with disabilities and older people. We worked with US Senate leaders to draft a letter to the UN Secretary General calling for increased protection and gender-based violence risk mitigation efforts and continued access to sexual and reproductive health services; this letter resulted in the Secretary General urging UN agencies to prioritize these issues from the earliest stages of the conflict. We also worked alongside partners to push for direct support to local women's rights organizations leading response efforts within Ukraine and in countries hosting Ukrainian refugees and elevating their leadership in humanitarian decision-making.

Ukrainian refugees head for the border with Slovakia after the Russian invasion, February 2022.





Afghan women protest outside the UNHCR office in New Delhi.

RIGHTS & JUSTICE

Refugee, migrant, and stateless women and children around the world routinely face legal and human rights violations. WRC holds governments accountable to their obligation to respect women and children's rights, so they can find safety, access justice, and rebuild their lives.

PUSHING BACK AGAINST "REMAIN IN MEXICO"

WRC engaged in advocacy to hold the Biden administration to its campaign promises on immigration and to ensure that access to asylum is restored at the US-Mexico border. Following the decision by a Texas court ordering the Biden administration to reinstate "Remain in Mexico," a policy that requires certain asylum seekers to wait in Mexico while their cases are processed in US immigration court, we led binational advocacy to draw attention to the harms of the policy, monitoring on-the-ground conditions for individuals returned via the program.



Honduran women seeking asylum are forced to wait in a tent city in Mexico.

In June 2022, we celebrated the Supreme Court's decision affirming the Biden administration's decision to end Remain in Mexico, and immediately co-authored an [op-ed](#) bringing attention to the stories of those directly impacted. In the following months, we held the Biden administration to account in disenrolling people as quickly and humanely as possible from Remain in Mexico. In fall 2022, we celebrated a victory when Mexico's Supreme Court declared that the Mexican government had failed to comply with human rights standards in its acceptance of the policy, making it more difficult for any US administration to reinstate the policy in the future.

SECURING THE BIDEN ADMINISTRATION'S PLEDGE TO END TITLE 42

After sustained, years-long advocacy, WRC and the #WelcomeWithDignity (#WWD) campaign* and our partners celebrated the Biden administration's decision to end the use of Title 42. Title 42 is the Trump administration policy that for so long has resulted in illegal expulsions of people seeking protection at the US border. Although the decision to end Title 42 continued to face difficult court challenges, #WWD also played a critical role in advocacy to reject Congressional attempts to further restrict or block access to asylum, resulting in the passage of legislation free of anti-asylum amendments. #WWD remains the go-to resource for rapid response to developments relating to asylum, bringing together advocacy efforts and policy recommendations from a wide range of groups around the country, including directly at the US border.

* The #WelcomeWithDignity campaign is a coalition of more than 100 organizations. The campaign is housed at WRC.



Title 42 resulted in people seeking safety in the US being turned away from the US-Mexico border more than 2 million times.



A STEP TOWARD ACHIEVING GENDER-EQUAL NATIONALITY RIGHTS

In September 2022, more than 60 representatives from 17 States in the Middle East-North Africa (MENA) region convened in Larnaca, Cyprus, for a conference on achieving gender-equal nationality rights. The conference was organized by the Global Campaign for Equal Nationality Rights (GCENR)* in partnership with the United Nations High Commissioner for Refugees (UNHCR) and the United Nations Children’s Fund (UNICEF). Participants included current and former government officials, parliamentarians, civil society, UN officials, and other experts and affected individuals. The conference presented an opportunity to increase awareness of the benefits of gender-equal nationality rights, facilitate communication between States in the MENA region through the exchange of good practices, and consider opportunities to strengthen women’s rights and equal ability to access and confer nationality. To build on momentum following the conference, GCENR, UNHCR, and UNICEF released a [joint statement](#) on International Human Rights Day, urging reforms to uphold gender equality in nationality laws, particularly in the MENA region.

* GCENR is hosted by WRC.

Representatives from 17 States in the Middle East-North Africa region convened in Larnaca, Cyprus, for a conference on achieving gender-equal nationality rights.

“ **Being in that space at the conference was refreshing, especially after a particularly exhausting year, as you get to look at the same issue from a different perspective, and to hear different voices, challenges, and experiences. I have received and learned so much in return!** ”

-Conference participant



GENDER- BASED VIOLENCE

All displaced people are at risk of sexual and gender-based violence (GBV) and exploitation. The risk is particularly high for women and girls, but also exists for men and boys. WRC is working to fundamentally transform the way GBV is addressed in humanitarian settings.

ACCESS TO INCOME HELPS SURVIVORS OF GENDER-BASED VIOLENCE

For forcibly displaced women around the world, especially survivors of gender-based violence (GBV), access to and control over sustainable sources of income remains critically low. To address this problem, WRC has partnered with the Danish Refugee Council to advance economic empowerment of GBV survivors in humanitarian settings across four countries: Jordan, Lebanon, Niger, and Uganda. The goal is to create evidence-based, gender-transformative, and localized program models that integrate economic recovery programming into GBV prevention and response programs. Since the project began in August 2021, WRC and DRC have engaged dozens of local and national actors and guided local consultants to conduct gender and market assessments in each country. In September 2022, we published [“A Way Forward: Landscaping Report on Integrated Gender-Based Violence and Economic Recovery Programming,”](#) which collated existing evidence and working knowledge on these topics. Using the research findings, we will provide guidance to our local partners for the development of a gender-transformative integrated program model, localized to each context.

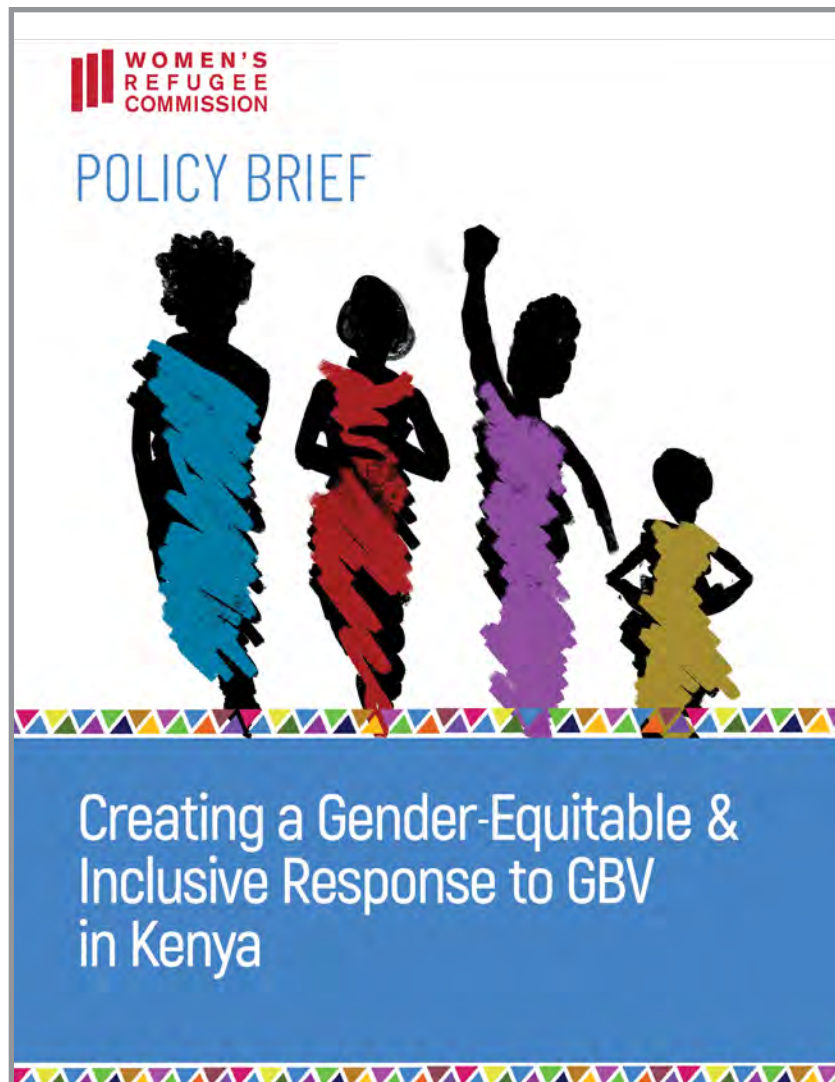


A group of local stakeholders in Niger discuss a gender and market assessment, part of a project to advance economic empowerment of GBV survivors.

SEXUAL VIOLENCE AGAINST ADOLESCENT BOYS AND MALE YOUTH: PHASE 2

All refugees—whatever their gender or sexual identity—are at risk of sexual violence. Following phase 1 of a project looking at the effects of sexual violence against men and boys, WRC is now collaborating with LGBTQI+-led organizations, national NGOs, and UN partners to develop and implement resources to strengthen the capacity of humanitarian practitioners to help humanitarian practitioners better understand and respond to the needs of male survivors of sexual violence and those at risk. We have also led webinars and presented at international conferences and symposiums on this work.

In addition, we are chairing a working group on male survivors in Ukraine to strengthen the capacity of GBV practitioners to deliver appropriate services to male survivors of sexual violence.



CREATING A GENDER-EQUITABLE AND INCLUSIVE RESPONSE TO GENDER-BASED VIOLENCE IN KENYA

In 2022, WRC conducted a research project aimed at understanding the role of local civil society organizations (CSOs) and NGOs in creating a gender-equitable and inclusive response to GBV in emergency contexts in Kenya. The project was part of the response to the 'Call to Action Roadmap' for enhancing support for the localization of GBV interventions in humanitarian crises, that is, placing the power in the hands of those living through crises.

Working with myriad local partners, the research identified the barriers and facilitators to women-led civil society response to GBV in humanitarian crises in Tana River and Nairobi counties. We made recommendations to mitigate the barriers and enhance the facilitators. And we developed a road map on actions necessary to bridge the identified gaps and create equal partnerships between the international actors in the humanitarian sector and local feminist CSOs and actors in addressing GBV in humanitarian crises.

SEXUAL AND REPRODUCTIVE HEALTH AND RIGHTS

Lack of sexual and reproductive health (SRH) care is a leading cause of death, disease, and disability among crisis-affected women and girls of reproductive age. WRC is committed to protecting the sexual and reproductive rights of people affected by crisis and ensuring that lifesaving health services are available from the onset of an emergency through recovery.

WRC is leading global advocacy to increase access to contraceptive services in crises.

Poster showing the services available at the Sudan Family Planning Association clinic in a refugee camp in eastern Sudan.

ADVANCING ACCESS TO CRITICAL FAMILY PLANNING SERVICES

Access to contraceptive services is both a fundamental human right and a lifesaving public health intervention. However, in crisis-affected settings it remains difficult for people to access contraceptives. WRC is leading global advocacy to catalyze commitment to and investment in contraceptive services in crises among key stakeholders: donors, governments, humanitarian agencies, and development agencies.

We are also partnering at a regional level with the Ouagadougou Partnership, a platform dedicated to advancing access to contraceptive services in nine Francophone West African countries. Additionally, WRC received a new grant to partner with the Sudan Family Planning Association and Rahnuma Family Planning Association of Pakistan to increase access to contraceptive services among Ethiopian and Afghan refugees and local host communities. The project focuses on ensuring that the full range of contraceptive methods are available, and that marginalized groups—including adolescents, people with disabilities, and sexual and gender-based violence survivors—have access to these critical services.



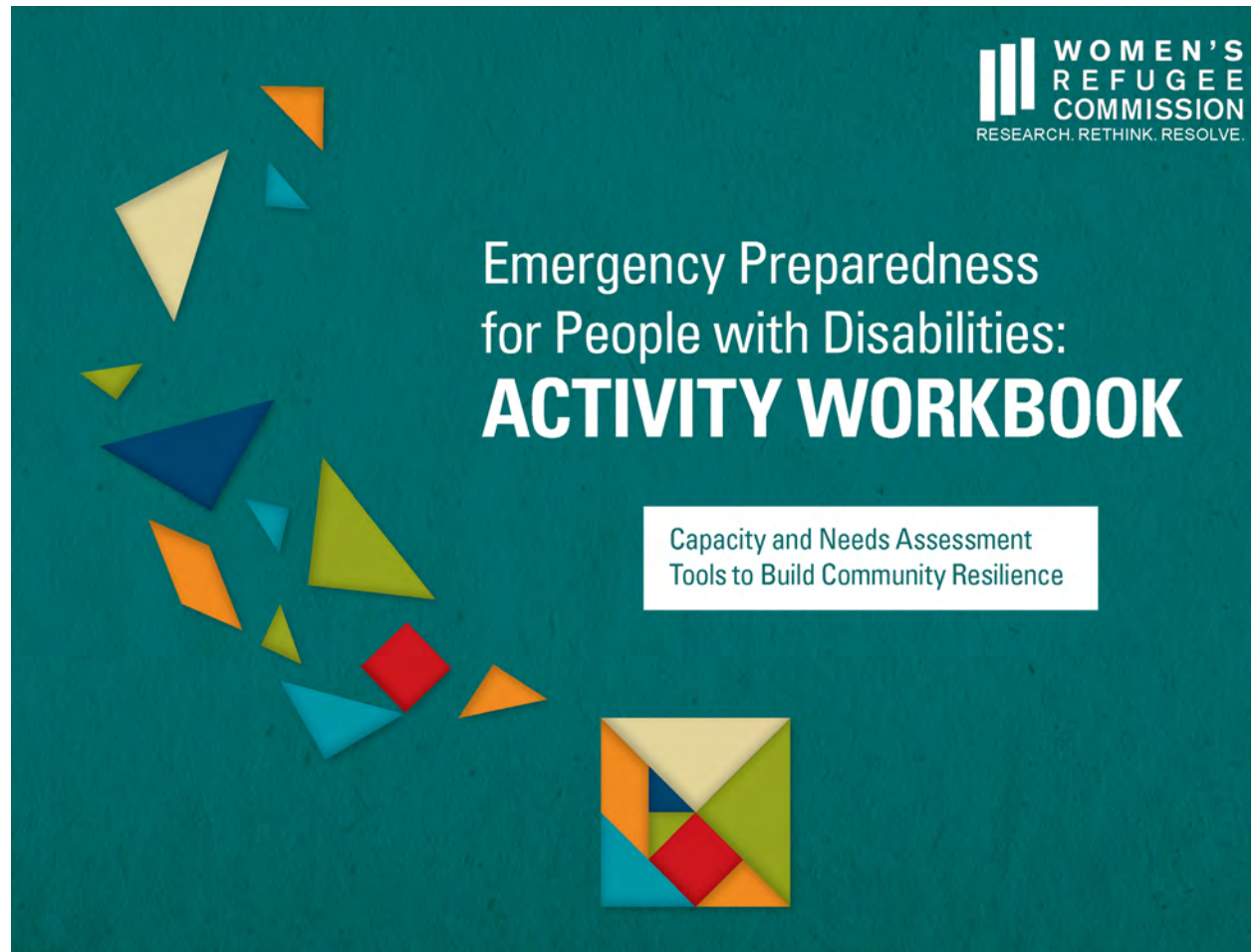
AN INNOVATIVE PROJECT LOOKS AT THE SRH NEEDS OF OLDER PEOPLE AND PEOPLE WITH DISABILITIES

During natural disasters and conflict, the specific needs of older people and people with disabilities are often overlooked—including their sexual and reproductive health and rights (SRHR). WRC and the Family Planning Association of Nepal (FPAN), the Nepal Disabled Women Association (NDWA), and the Senior Citizen Care Society (SCCS) of Nepal worked together to conduct research in partnership with older people and people with disabilities to explore their priorities for disaster preparedness and SRHR.

Partners designed an innovative data collection methodology, using workbooks with participatory drawing, mapping, and journaling activities, and together developed recommendations and step-by-step guidance on designing inclusive and accessible activities for community-level preparedness planning. The project was generously supported by Elrha's Humanitarian Innovation Fund.

A NEW GLOBAL STRATEGY FOR SRHR

At a time of increasing global instability, there is a growing need for a strengthened SRHR response. The Inter-Agency Working Group on Reproductive Health in Crises (IAWG), a coalition of over 55 organizations and 4,000 individual members that is hosted by WRC, is well-positioned to meet that need by harnessing the collective knowledge, skills, and expertise of its worldwide members. In 2022, IAWG developed a five-year strategic plan to broaden meaningful participation in the coalition, improve access to coalition resources, and support timely, comprehensive, and inclusive SRHR response in all humanitarian emergencies. www.iawg.net



“**No one should be left behind. Everyone should work together for the benefit of all.**”

-Older man, FGD participant

ECONOMIC EMPOWERMENT & SELF- RELIANCE

Most refugees have a profound desire to provide for themselves and their families. WRC works to ensure that humanitarian programs provide refugee women and youth access to cash assistance and opportunities to help them safely earn a living. This increases refugees' self-reliance and resilience, restores their dignity, and protects them from harm.

“ I feel like a queen now. I swear to you, I was minimized when I was with my children’s father. I was beaten, I was abused, I was yelled at, mistreated. But now, as I tell my children, with money, I’m the queen, because with money you can pay your expenses. ”

-Ecuadorian woman, cash recipient

An awareness session on gender-based violence and child labor was conducted by the mobile team in northwest Syria.

CASH ASSISTANCE HELPS SURVIVORS OF GENDER-BASED VIOLENCE

Until now, there has been limited evidence on the impact of cash and voucher assistance (CVA) on the prevention of and response to gender-based violence (GBV) in humanitarian settings. In June 2022, WRC, alongside CARE International and other global partners, concluded the pilot and evaluation of a program model that integrated CVA into GBV case management for refugees, migrant, and host communities in three contexts: Colombia, Ecuador, and northwest Syria. In conjunction with local organizations in each site, we conducted quasi-experimental studies to evaluate the efficacy of this model in comparison to GBV case management alone.

The findings of this study were groundbreaking. They demonstrated that cash assistance, when appropriately considered, augmented the protection, economic capacity, and well-being of participants in GBV case management. In addition, the study found that CVA can help to enhance inclusion in program delivery to adolescent girls, women with disabilities, and LGBTQIA+ individuals. As part of this work, we developed more than 20 resources, including program tools, links to workshops, webinars, and videos, learning briefs and evaluation reports, available in English, Spanish, and Arabic. These resources can be used by humanitarian actors and other stakeholders to inform their programming and policies related to CVA and GBV.



REFUGEE SELF-RELIANCE INITIATIVE PROMOTES ECONOMIC WELL-BEING FOR REFUGEES

The Refugee Self-Reliance Initiative (RSRI) aims to promote self-reliance for refugees early and everywhere through effective economic programs. The RSRI-developed Self-Reliance Index is a tool that measures the impacts of economic programs on refugee households and tracks their progress towards self-reliance over time. It is now being used by 41 partner organizations in 26 countries.

Hundreds of practitioners have been trained on the use of the Self-Reliance Index. E-learning modules on its use have been rolled out in English, Spanish, French, and Arabic. In partnership with the US Department of State, the RSRI organized and conducted a series of innovation labs on refugee self-reliance as part of the UN High Commissioner for Refugees' Dialogue on Protection. The labs brought together UN, private sector, donor, host government, practitioner, and refugee representatives to generate learning and inform the pledging and commitment process for the Global Refugee Forum that will be held in December 2023.



Paula Reed Lynch of the US Bureau for Population, Refugees, and Migration delivers the statement that came from the innovation labs on refugee self-reliance, part of the UNHCR's Dialogue on Protection. © RSRI

“[We will use the data] to identify the actual needs of beneficiaries [...] and if we have new projects at DRC, we can rely on the data collected from the SRI to inform programs or what interventions could help beneficiaries to improve their self-reliance.”

*-Monitoring, Evaluation, Accountability & Learning (MEAL) Assistant
Danish Refugee Council – Lebanon*

GENDER AND SOCIAL INCLUSION

WRC promotes the full inclusion of traditionally marginalized groups, such as refugee women, people with disabilities, the LGBTQI+ community, and adolescent girls, in identifying solutions and designing programs that meet their unique needs and build upon their capacities.

Child Marriage in Humanitarian Contexts

Child marriage affects one in five adolescent girls globally and presents a significant public health concern for girls and their communities in many contexts. The negative effects of child marriage range from tolls on the physical and mental health of girls to a reduction in economic opportunities and outcomes for their future children. Adolescents impacted by conflict and other humanitarian emergencies are some of the most vulnerable to this harmful practice, but the extent to which these contexts affect rates and drivers of underage marriage is not known.

In 2022, WRC released findings based on research in Ethiopia, Lebanon, and Myanmar. Our findings provide valuable insights into the relationship between child marriage and humanitarian contexts. They will help to inform future programming to prevent child marriage in these settings.



“The sessions are meant to support the whole family. They support parents, brothers, and sisters. After I participated in the sessions, we as a family are supporting one another. We never did that. My brother never asked me what’s wrong with me. After the sessions he started to ask me how I feel. We started talking to each other.”

-Adolescent girl participant

SIBLING SUPPORT FOR ADOLESCENT GIRLS IN EMERGENCIES

Adolescent girls are disproportionately vulnerable to violence, often stemming from harmful gender norms and exposure to violence within the household. In humanitarian settings, disrupted social support systems and changing roles within a family can increase levels of violence in households, while also compromising adolescent girls’ safety and well-being.

WRC’s Sibling Support for Adolescent Girls in Emergencies (SSAGE) Initiative aims to build the protective capacities of adolescent girls through a gender-transformative program that engages girls, their male siblings, and their parents and caregivers. Launched in 2020, the SSAGE Initiative has reached more than 1,000 participants to date, in 12 crisis-affected communities in Jordan, Niger, and Nigeria. The SSAGE intervention is complemented by research to better understand the impact of the project and how best to involve families and households in future protection programming for adolescent girls in humanitarian settings.

GRYN PROVIDES CRITICAL FUNDS TO ORGANIZATIONS LED BY REFUGEE YOUTH

The Global Refugee Youth Network (GRYN) is achieving something rarely seen in international organizations: directing funding to young leaders for projects that they themselves design and implement. In 2022, GRYN opened its first call for proposals from refugee youth-led organizations (RYLOs) and received over 90 applications. Twenty-two RYLOs in seven countries were awarded grants of \$1,000 - \$5,000 to address challenges in their communities, including gender-based violence, climate justice, reproductive health, clean energy, entrepreneurship, and youth empowerment. The projects funded by GRYN have had a positive impact on the lives of thousands of young people (2,500 directly and 3,000 indirectly).



Twenty-two refugee youth-led organizations implemented projects in seven countries that benefited thousands of young people. VIDEO: <https://www.youtube.com/watch?v=0zTCI2FvKgk>

In Nakivale, Uganda, Botanica ran a malaria education campaign focused on educating vulnerable mothers with children under age 5 how to use mosquito nets and repellent to keep their families safe from malaria.



ADVOCACY

The goal of WRC's advocacy team, based in Washington, DC, New York, and Geneva, is to advance gender equality and inclusion in refugee settings by influencing the programs, policies, and practices of humanitarian agencies, donor governments, and local partners. Our Migrant Rights and Justice Team also conducts robust advocacy with the administration and congress in Washington, DC, to advance the rights of people seeking asylum in the United States (see Rights and Justice section, page 6).

WRC STRENGTHENS RESPONSES TO GENDER-BASED VIOLENCE IN EMERGENCIES

Driving stronger attention and resources to addressing gender-based violence (GBV) in emergencies requires dedicated policy change. WRC spearheads advocacy efforts for governments, donors, and international organizations to promote GBV prevention, mitigation, and support for survivors as a basic part of humanitarian response. As the secretariat of the [Call to Action on Protection from GBV in Emergencies](#), WRC continued to play an active role in the initiative, particularly advocating for local and national women's rights organizations to lead GBV response activities in their communities and to participate in global/regional discussions regarding GBV.

WRC's advocacy also influenced the US government to increase funding for global GBV programs to a historically high \$250 million, including resources for GBV in crises, and to elevate attention to child marriage, sexual violence, and other forms of GBV in emergencies within the [US Strategy to Prevent and Respond to GBV Globally](#), a whole-of-government US policy aimed at addressing GBV issues worldwide. The US's new [Safe from the Start ReVisioned initiative](#), which focuses US policy on embedding GBV in humanitarian response from the onset of emergencies, also prioritized more effective action in the field for GBV response and underscored local women-led organizations to lead humanitarian responses.

UPHOLDING SEXUAL AND REPRODUCTIVE HEALTH AND RIGHTS

In recent years, we have seen a growing trend of attacks on sexual and reproductive health and rights (SRHR) in the United States and around the world. These attacks have made it more difficult for women and girls to access the essential SRH care they need, including contraception, safe abortion, and maternal health care.

In response to these attacks, WRC has joined advocacy efforts to push back against an increasingly restrictive environment and bring attention to the critical SRHR needs of women and girls in emergencies. We spoke at the launch of the UN Population Fund's State of the World's Population report, and integrated SRHR recommendations into advocacy with the US, UN, and other humanitarian policymakers as a critical aspect of response to ongoing crises in Ukraine, Afghanistan, and elsewhere. We also engaged with the UN Security Council and other multilateral bodies to elevate SRHR as a critical priority in responding to crises and implementing the Women, Peace, and Security agenda. Our advocacy has resulted in inclusion of SRHR in several US policies, including the [US Strategy to Prevent and Respond to GBV Globally](#) and the [Safe from the Start ReVisioned initiative](#).



Gayatri Patel, VP, advocacy and external relations (top right), speaks at the launch of [UNFPA's State of the World's Population Panel with Wilson Center](#) <https://www.youtube.com/watch?v=Fb6wBo16Wnk>

LEADING THE WAY ON INTEGRATING AGE, GENDER, AND DIVERSITY INTO HUMANITARIAN RESPONSE

In 2022, WRC galvanized civil society partners, UN agencies, and others to focus on inclusive humanitarian action. The Group of Friends of the Global Refugee Forum's Working Group on Age, Gender, and Diversity (AGD) took shape in 2022. Under WRC's leadership, the working group continues to catalyze the humanitarian community to enhance the integration of AGD considerations into their pledges and humanitarian responses and to promote the inclusion of refugees' access to services and protection, regardless of their age, gender, disability, and/or other forms of diversity.

AGD is a central priority in WRC's policy recommendations to the UN. We are working to ensure that AGD is reflected in UN resolutions, UN Secretary General reports, and outcome documents. We are also working to engage the US and other humanitarian policymakers on issues such as Ukraine response, GBV and SRHR in emergencies, and economic empowerment initiatives.

An older refugee woman cooks over an open fire.



WE HONOR VOICES OF COURAGE

For the first time in three years, we gathered in person for our annual Voices of Courage Awards Luncheon. Our honorees—Pari Ibrahim, founder and executive director of the Free Yezidi Foundation, and Guerline Jozef, co-founder and executive director of Haitian Bridge Alliance— participated in a lively discussion moderated by WRC board co-chair Alex Arriaga. Baker Botts received the corporate Voices of Courage Award for its outstanding leadership in support of refugees.

Watch Voices of Courage - https://youtu.be/3hhDo_d17tU



WRC Board Co-Chair Alex Arriaga moderated a discussion with Pari Ibrahim (center) and Guerline Jozef (right).



WRC Executive Director Sarah Costa.



Gaby Moreno, Grammy- and Emmy-nominated singer-songwriter-producer and winner of a Latin Grammy for best new artist, performed at the event.



Voices of Courage honorees with WRC co-founder and honorary chair Liv Ullmann.

THE LANTERN TOUR: CONCERTS FOR MIGRANTS AND REFUGEES

The Lantern Tour: Concerts for Migrants and Refugees returned in 2022, with three concerts in Pennsylvania and Virginia. The Lantern Tour unites art and advocacy in support of migrant and refugee women, children, and youth around the world. Concerts, which benefit the Women's Refugee Commission, showcase a unique evening of acoustic performances and artist collaborations that allow us to celebrate the power of music.

www.thelanterntour.org



Artists participating in the 2022 Lantern Tour included Teresa Williams, Thao, Emmylou Harris, Steve Earle, and Gaby Moreno.

THE LANTERN TALKS: BRIDGING ART AND ADVOCACY

In April 2022, WRC hosted a Lantern Talk with Jonas Poher Rasmussen, director of the award-winning, Oscar-nominated film "Flee." "Flee" tells the extraordinary true story of Amin, a former Afghan refugee, on the verge of marriage, which compels him to reveal his hidden past for the first time. Other featured speakers were Gayatri Patel, WRC's vice president of advocacy and external affairs, and Bilal Askaryar, communications coordinator at the Welcome with Dignity Campaign, who shed light on the current situation for Afghan women and girls and for people seeking asylum at the US border.

www.lanterntalks.org



OUR GENEROUS DONORS – FISCAL YEAR 2022: OCTOBER 1, 2021 – SEPTEMBER 30, 2022*

Anonymus
 Janice Abruzzo
 ActBlue Charities
 Madelyn Bucksbaum Adamson
 AIG
 Alchemy Foundation
 Analisa Allen
 Elizabeth B. Allen
 Brianne Amato
 American Endowment Foundation
 Jean Anderson
 Emily Anderson
 Sherrell Andrews
 Anne Bianchi Gundersen Foundation
 Trust
 Annie E. Casey Foundation
 Anonymus (23)
 Appel Charitable Fund
 Maria Alexandra Arriaga
 Ashurst Foundation
 Carol Axelrod
 AYCO Charitable Foundation
 Baker Botts
 Lori Bassman
 BDO
 Heather Beckman
 Benevity
 Tracy Betts
 George and Leslie Biddle
 Sheila Biddle
 Bill & Melinda Gates Foundation
 Henny Billett
 Blackbaud Giving Fund
 Blackbaud, Inc.
 Bloomberg LP
 Blue Oak Foundation
 Susan Blumenberg
 Afshan Bokhari
 Catherine Boriack
 Lisa Borodovsky
 Ann D. Borowiec
 Virginia Botelho
 BRE Presents, LLC
 John Kevin Bright
 Andrew Brimmer
 Lauren Brown
 Diana Bui
 Joy Bunson
 Dale Buscher
 Harry Butcher
 Dawn T. Calabria
 Maureen Callahan
 CARE International
 Thomas Cartwright
 Kicab Castaneda-Mendez
 Charles and Francene Rodgers
 Charitable Fund
 George Chu
 Megan Colwell
 Kathy Cook
 Corner Foundation
 Sarah H. Costa
 Anne Covert
 Candi Cross
 Katharine I. Crost

Diane Culbert
 Daniels Family Foundation
 Danish Refugee Council
 Elizabeth Learson Daniels
 Louise Davis
 Sabrina De Russeau
 Virginia L. Dean
 Alison Deans
 Shauna T. Denkensohn
 Ivonne Dersch
 Nandana Dev Sen
 Bernadette M. Diaz
 Directions for Rural Action Fund
 Terence Dougherty
 Elrha Humanitarian Innovation Fund
 Drusky Entertainment
 Dina Dublon
 Michele Dufresne
 Maddy Dwertman
 Jodie Eastman
 Ebenshade Family Foundation
 Jane Edwards
 Anne Eilers
 Diana Elghanayan
 Evan and Tracy Segal Family Foundation
 Facebook
 Elizabeth Ferris
 Jo Ellen Finkel
 Gary Fischer
 Elizabeth Flynn
 For a Song, Inc
 Foundation for a Just Society
 Mimi Frankel
 Friedman Family Foundation
 Friends' Central School Corporation
 Susan D. Fuller
 FW.us Education Fund
 Martha J. Gallo
 Michael and Joan Gambro
 Gerson Family Foundation
 Holly G. Gewandter
 Give Lively Foundation
 Jonathan Gold
 Olivia Golden
 Peggy E. Goldwyn
 Good Today
 Penelope Goodfriend
 Mary E. Gosselink
 Linda Gottlieb
 Rita Gottlieb
 Greater Washington Community
 Foundation
 Jackie Greenfield
 Augusta Gross
 Stewart K. Gross
 Carol Grossman
 Habou Charitable Fund
 Barbara Hack
 Steven Hammell
 Lynn Harman
 Sarah Harris
 Janet Hendricks
 Cheryl Henson
 Lucile Herbert
 Joshua Hoffman

William Hollander
 Jenny Holzer
 Justin Houghton
 Carol L. Hymowitz
 Jewish Communal Fund
 Sandra Joireman
 Susan Jonas
 Svati Kania
 Kealy Family Foundation
 Lisa Kelly
 John Kent
 Mindy Kornhaber
 Jacquie M. Kouyoumjian
 John Krause
 Gary Krause
 Sandra Krause
 Judith Krupp
 Liz Krupp
 Catherine LaCour
 Alison C. Lankenau
 Roberta Larson
 Ruth Lazarus
 Amy B. Leeds
 James and Kate Lehrer
 Lenzner Family Foundation
 Suzanne Loebt
 Michele Logan
 Marcia Lusk
 Rufus Lusk
 Virginia D. Lynch
 Thays Lyons
 Marjorie Magner
 Carolyn Makinson
 Caroline Mannix
 Sheila Marcus
 Linda Martin
 Susan F. Martin
 Kelly Mathieson
 Thomas Mbise
 Peggy McDevit
 Steven McGann
 James B. McHugh
 Susan R. McKay
 Alexander McKiernan
 Cynthia McMullin
 Mercy Corps
 Virginia Millhiser
 Robert Milner
 Ministry of Foreign Affairs of Denmark
 Ministry for Foreign Affairs of Sweden
 Jane Moeller
 Katherine B. Moseley
 Rosemary Moukad
 Raji Naik
 Theresa F. Nedelman
 Lorrin Nelson
 NEO Philanthropy's Four Freedoms Fund
 Network For Good
 Larry Nevenon
 Virginia Newton
 Alex Nicksay
 Marilyn Nissenson
 Elaine Nonneman
 Oak Foundation
 O.L. Pathy Foundation, Inc.

Miguel Oleaga
 Jane Olson
 Beth Olmstead
 Shelley Onderdonk
 Open Society Foundations
 Eva Orlovski
 Orrick, Herrington & Sutcliffe
 Foundation
 Diane Oshin
 Latricia Parker
 Anamarie Pasdar
 Eli Paster
 Megan Patel
 Paula Jean Stober and Willard Bucklen
 Charitable Fund
 Alison Pavia
 Paypal
 Jenny L. Perlman
 Regina S. Peruggi
 Philips Family
 David L. Phillips
 Plan International
 Anna Mary Portz
 Anthony Pullen
 Quarterlife Institute
 Judith Rabinor
 Hazel M. Reitz
 Susan F. Rice
 Faye O. Richardson
 Roberts Family Fund
 Rockefeller Family Fund
 Francene Rodgers
 Marina Roester
 Mercy Rome
 William and Sandra Rosen
 Florence Rosenstock
 Nancy Rubin
 Rutgers
 Katharine B. Sacks
 San Francisco Foundation
 Sas and Stuart Weber Fund
 Diane Schafer
 Sue Schimmenti
 Marilyn Schramm
 Dora B. Schriro
 Sen Makinson Giving Fund
 Josie Sentner
 Shannon Dabek Fund
 Daniel Shefter
 Catherine L. Shimony
 Sidney E. Frank Foundation
 Meryl Streep / Silver Mountain
 Foundation for the Arts
 Mahira Singh
 Diane M. Sinti
 Kirstin Slattery
 Isabel Sloane
 A. J. Smith
 Geralyn Smith
 Randy and Geri Smith
 Susan Solomon
 Jasmine Soni
 Valerie Sopher
 Leah Sorkin
 Square, Inc.

Donald Steinberg
 Diana Stewart
 Paula Stober
 Ivana Stolnik-Lourie
 Elizabeth Storch
 Strombom Family Giving Fund
 Swiss Agency for Development and
 Cooperation
 Anne M. Tatlock
 The 2022 Fund (a donor advised fund of
 The Northern Trust Charitable Giving
 Program, a program of The Chicago
 Community Foundation)
 The Amelia Foundation
 The Angelson Family Foundation
 The Barbara and Frank Lieber Family
 Charitable Trust
 The Community Foundation of Western
 North Carolina, Inc.
 The David and Lucile Packard
 Foundation
 The Ford Foundation
 The Grove Foundation
 The Howard Gilman Foundation
 The International Institute for
 Environment & Development (IIED)
 The Kurt and Julie Hauser Foundation
 The Present Tree Ltd
 The Susan A. and Donald P. Babson
 Foundation
 Tides Foundation
 Kate S. Tomlinson
 Becky Torrez
 Sandra S. Tully
 Liv Ullmann
 Unbound Philanthropy
 US Department of State, Bureau of
 Population, Refugees and Migration
 USAID Bureau of Humanitarian
 Assistance
 Marcia Wallen
 Berkeley Warburton
 Christine P. Wasserstein
 Ilana Waxman
 Elizabeth Wehrle
 Lois Weinroth
 Rachel Weinstein
 Carrie Welch
 Joella Werlin
 Marissa C. Wesely
 Fiona Westfeld
 Rebecca White
 Katie Williams
 Kelli Williamson
 Sandra Wirta
 Christopher Wolfe
 Suhas Yerra
 Thomas B. Wright
 Barbara B. Wynne
 Worldwide Logistics Inc.

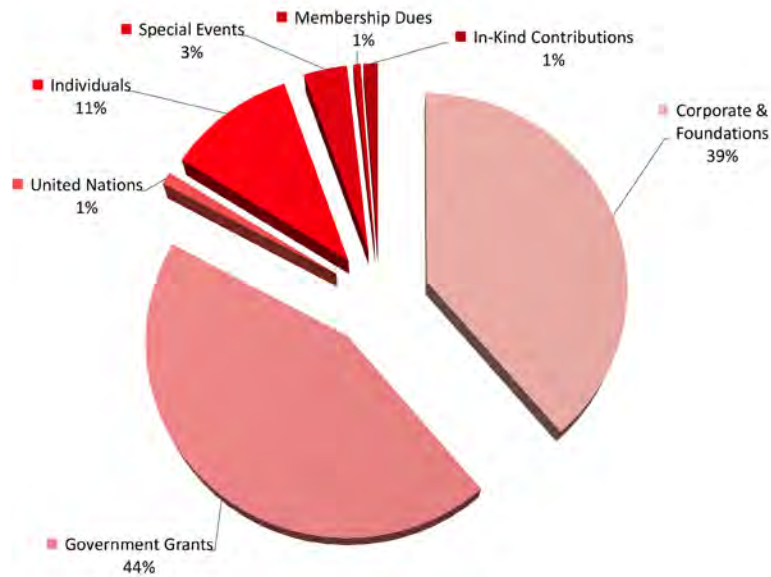
* This list comprises donors who made gifts of \$500 or more. WRC would like to thank the hundreds of donors who made gifts below \$500, whose support is critical to our ongoing work.

FINANCIAL REPORT FOR FISCAL YEAR 2022

The Women's Refugee Commission is exempt from federal income taxes under Section 501(c)(3) of the Internal Revenue Code. Copies of our audited financial statements for FY 2022 are available on our website.

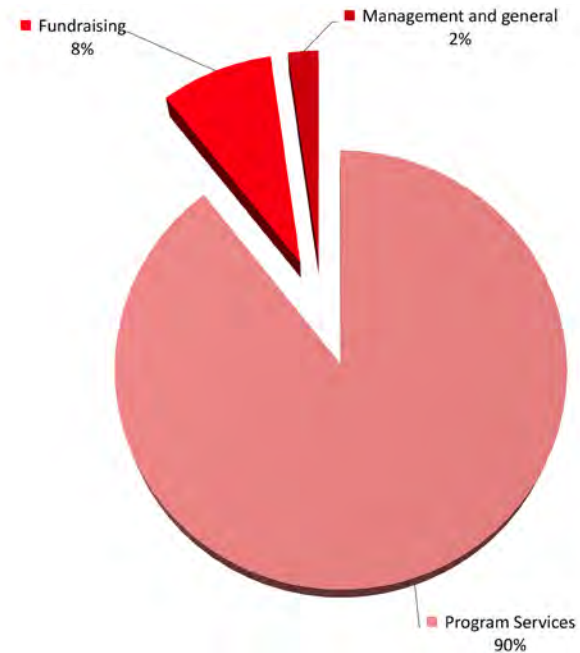
FY 2022 REVENUE

TOTAL REVENUE: \$7.8 million



FY 2022 EXPENSES

TOTAL EXPENSES: \$9.6 million



BOARD OF DIRECTORS

Board Co-Chairs

Alexandra Arriaga

Ambassador C. Steven McGann (ret.)

Board of Directors

Madelyn Bucksbaum Adamson

Analisa Allen

Liz Appel

Heather Beckman

Sarah Costa (ex-officio)

Maddy Dwertman

Catherine LaCour

Leila Rassekh Milani, JD, MA

Yen Pottinger

Joanna Pozen

Nandana Dev Sen

Diane Sinti

Foni Joyce Vuni

Berkeley Warburton

Carrie Welch

Suhas Yerra

(As of September 2022)

CREATE LASTING CHANGE TODAY

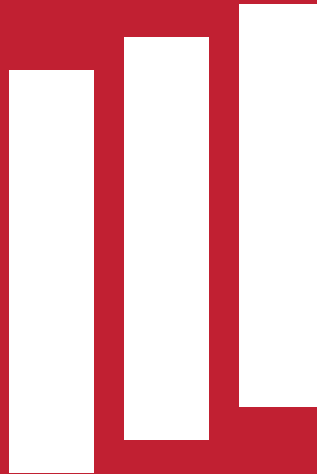
For more than 30 years, thanks to the generous support of donors like you, the results of WRC's work continue to be transformative and far-reaching for people displaced by conflict and crisis worldwide: They are far more likely to find safe, dignified work and have access to comprehensive services to prevent and respond to sexual violence from the onset of a crisis. Marginalized communities and individuals, particularly women and adolescent girls and those with disabilities, are represented in the programs and policies that affect their lives. And families seeking sanctuary in the US have a fierce and fearless advocate standing for them.

Your tax-deductible donations to WRC will be used where it is most needed to support refugees by helping to assure their human rights and protection, their health and economic security, and their freedom to make the decisions and drive the solutions that affect their lives.

For every dollar we spend, 90 cents go directly to programs that provide crucial support to refugees.

Please visit www.womensrefugeecommission.org/donate to learn about ways to give and create lasting change or scan the QR code below to make a donation.





**WOMEN'S
REFUGEE
COMMISSION**

Research. Rethink. Resolve.

Facebook / X/Twitter @wrcommission

Instagram / Threads @ womensrefugeecommission